

Detailed Directions To Help You Find Us



(905) 693-8804

STEP 1 - Know your destination

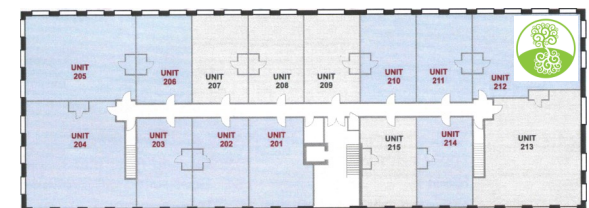
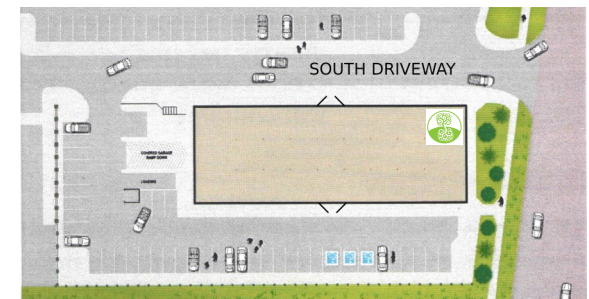
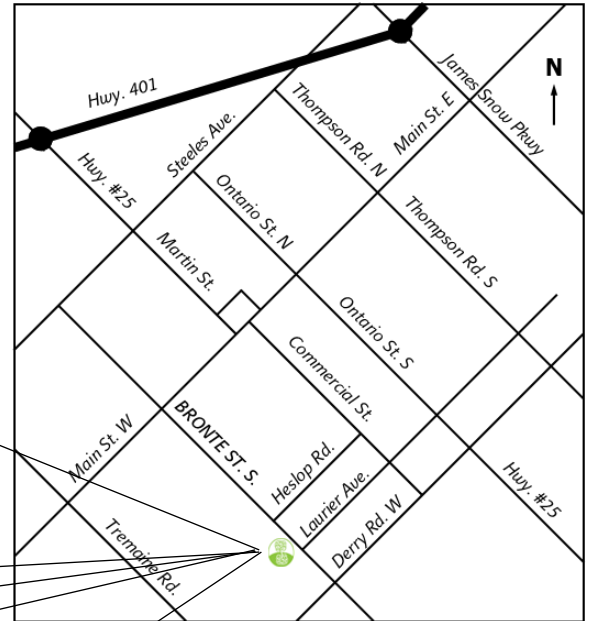
Please be sure to go to Bronte STREET SOUTH.
This is different from Bronte Road, which is Ontario Street or Highway #25, South of Derry Road West.

STEP 2 - Go to 450 Bronte Street South in Milton, ON.

Wellroots is located in the Greenlife Business Centre, within the Bronte Corporate Centre Complex on the West side of Bronte at Laurier Avenue, just North of Milton District Hospital.

There are both north and south driveway entrances to the complex.

The entrances are marked '400-410-420 Bronte Street South' by stone pillars.



STEP 3 - Park

Look for the solar panels on our roof and the burgundy awnings on the lower level of the Greenlife Business Centre. Parking is available on-site.

STEP 4 - Enter the Greenlife Business Centre

Access to interior units is from either the North or South main building entrances at the middle of the building.

STEP 5 - Find us upstairs in Unit #212

We're on the second floor in Unit #212. At the top of the stairs, enter the hallway and turn right. We're at the end of the hall, last door on the left, in Unit #212.

Our location is also accessible via an elevator located in near building's main entrance in the south foyer. Please note that this elevator is somewhat slow because it is environmentally friendly (low power).